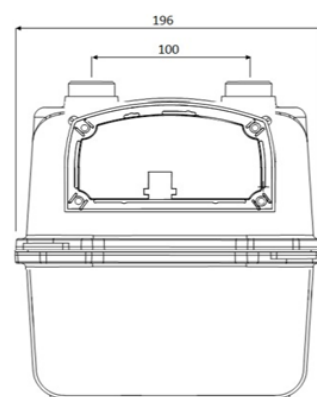
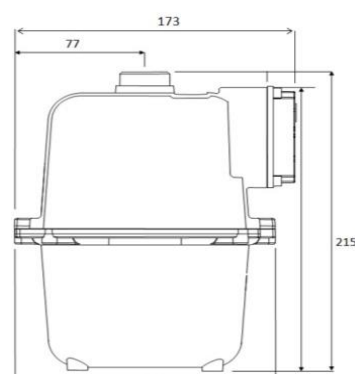




Specifications of G-4 Domestic Gas Meter

Meter Type	Positive Displacement
Gas type	Natural gas, LPG and all non-corrosive gases
Construction	Pressure die cast Aluminum (AS12U1)
Maximum Flow Rate	6.00 m ³ /hr.
Minimum Flow Rate	0.04 m ³ /hr.
Cyclic Volume	1.2 dm ³
Registered Measurement	99,999 m ³
Connection size	WG 7/8" TPI 14
Error Range for Q _{min} & Q _{max}	± 3% , ± 1.5%
Meter operating temperature range	-13°F to 140°F
Max Allowable Pressure	0.5Bars
Surface finish/ Surface treatment	Powder coated aluminum casted parts.
Material	Die casted Aluminum Alloy for corrosion, Impact protection.



Features:

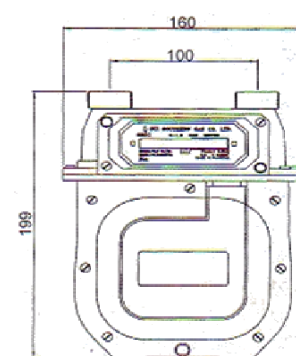
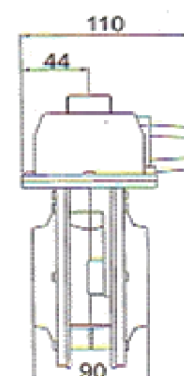
- Compact design fits a variety of installation environments.
- Reliable & maintenance free units.
- Dedicated facility for meter manufacturing.
- Standards compliant across multiple ranges.
- Testing of all meters at various stages.
- Incorporation of AMR (Automatic meter reading) function as per requirement.



**Sui Southern Gas
Company Limited**
Meter Manufacturing Plant

Specifications of G-1.6 Domestic Gas Meter

Meter Type	Positive Displacement
Gas type	Natural gas, LPG and all non-corrosive gases
Construction	Pressure die cast Aluminum (AS12U1)
Maximum Flow Rate	2.5 m ³ /hr.
Minimum Flow Rate	0.016 m ³ /hr.
Cyclic Volume	0.8 dm ³
Registered Measurement	99,999 m ³
Connection size	WG 7/8" TPI 14
Error Range for Q _{min} & Q _{max}	± 3% , ± 1.5%
Meter operating temperature range	-13°F to 140°F
Max Allowable Pressure	0.5Bars
Surface finish/ Surface treatment	Powder coated aluminum casted parts.
Material	Die casted Aluminum Alloy for corrosion and Impact protection.



Features:

- Compact design fits a variety of installation environments.
- Reliable & maintenance free units.
- Dedicated facility for meter manufacturing.
- Standards compliant across multiple ranges.
- Testing of all meters at various stages.

